

2010-2012

COROLLA

BODY SIDE MOULDINGS



Color-matched body side moldings help protect door exteriors from scratches, dents and chipping. Designed specifically to help preserve—and enhance—the vehicle's appearance.

INSTALLED HERE FOR

\$350



ACCESSORIES

2010-2012

COROLLA

Mudguards



Durable front and rear mudguards are designed to integrate with specific vehicle styling, body panels, structure and clearances—while helping to provide protection to vehicle paint from mud and dirt, as well as stone-chipping.

INSTALLED HERE FOR

\$145



2010-2012

COROLLA

Rear Bumper Appliqué



"Protects the top rear bumper surface area from minor bumps and scratches. The appliqué is made from tough polyurethane film and features a pearl-coated Toyota logo."

INSTALLED HERE FOR

\$110



2010-2012

COROLLA

Rear Lip Spoiler



Made of high quality ABS plastic—helping to ensure precisely sculpted detail and long-term durability—the color-keyed rear decklid lip spoiler mounts to the rear decklid and adds a sporty, integrated appearance that enhances the Camry sleek aerodynamic lines.

INSTALLED HERE FOR

\$680



2010-2012

COROLLA

BLU Logic Hands Free System, Small Button, Non-JBL, Non- Navigation

The BLU Logic^{®1} hands-free system integrates with the factory audio system to initiate and answer cellular phone calls, enabling cell phone use that is essentially "hands free". Owners can listen to incoming and outgoing cellular calls through the front factory speakers and a small microphone is designed to capture the voices of vehicle occupants. Incoming calls are answered with the push of a button. Outgoing calls are placed by cellular phone dialing and speaking into the fixed microphone provided. The sound level of incoming calls is easily adjusted up or down with simple, clearly identified button functions.

Note:BLU Logic conflicts with: 1) **Audio with JBL is a conflict** or 2) Audio with Navigation is a conflict. Please confirm that a knock-out plate is available in the vehicle to mount the switch prior to ordering.

INSTALLED HERE FOR

\$485

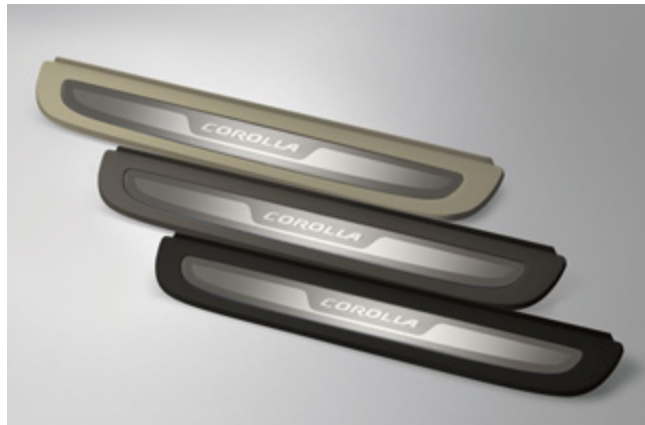


ACCESSORIES

2010-2012

COROLLA

Door Sill Enhancements



Stylish and practical, the custom-fit, heavy gauge brushed stainless steel door sill enhancements help protect the vehicle's door sills from unsightly scuffs, marks and scratches that can occur when occupants are entering and exiting the vehicle. Featuring a custom screen-printed vehicle logo, the door sill enhancements add to the vehicle's interior appearance.

INSTALLED HERE FOR

\$250



2010-2012

COROLLA

Cargo Net



Custom-crafted for the vehicle cargo area, the cargo net is designed to hold a variety of everyday items—from groceries to athletic gear—and ensure they don't shift around or tip over. The cargo net features a hammock-style design and durable netting that attaches to defined points in the rear cargo area, making it easily accessible. The cargo net can be installed or detached in seconds, and folds flat for storage when not in use.

CARRY OUT PRICE

\$45



2010-2012

COROLLA

Emergency Assistance Kit



This durable nylon kit features tools and supplies for handling minor emergency situations and repairs, without having to wait for a tow truck or repair service. Contents include booster cables, tire pressure gauge, hose clamp/tape, pocket tool and work gloves—plus essential emergency supplies such as survival wrap blankets, poncho, flashing LED lights, flashlight/lantern and water bag.

CARRY OUT PRICE

\$70.00



2010-2012

COROLLA

Cargo Tote



The collapsible, soft-sided cargo tote is designed to hold a variety of smaller everyday items—helping to ensure they don't shift around or tip over in the cargo area—while removable dividers provide multiple organizing options. The cargo tote features two carrying handles for easy loading and unloading and folds flat when not in use.

CARRY OUT PRICE

\$40



Leather Seats
Over 2000 interior patterns in
over 100 colors!



No automotive interior manufacturer offers a selection of colors and materials varied and extensive as Katzkin's. The quality of our interiors is unmatched by any of our competitors, even surpassing the look, feel and durability of those offered by many OEM's

INSTALLED HERE FOR
Two Rows \$1,500 with heat \$1,800

REMOTE START

2WAY

(GREAT FOR YOUR VEHICLE IF YOU CANNOT SEE IT WHEN IT STARTS)



INSTALLED HERE

\$499

*AUTOMATICS ONLY, VEHICLE MUST HAVE POWER LOCKS

- Complete Two Way Remote Engine Start And Keyless Entry System
- One 5 Button 2-Way Remote Control with Separate Lock and Unlock
- Super Bright White LED Back Light
- One 5 Button Code Hopping Remote Control with Super Bright Blue LED
- On-Board Temperature Sensor for Monitoring In-Car Temperature with LCD Remote
- Two Car Operation with 2-Way And One Way Remotes
- Auto Start Based On Temperature Threshold Set through LCD Remote
- Plug-in user programmable Coded Override Switch and LED on Antenna
- Built-In Parking Light Relay, Programmable (+/-)
- True RPM Sensing for Real Time Cranking
- Remote Start Tachless Mode using Adaptive Digital Processing
- Compatible with All Vehicles
- Gas or Diesel compatibility
- Factory Disarm and Rearm Output (-)
- Power Door Lock Control
- Three Auxiliary Channels with Selectable Output Types
- Turbo Timer plus over 40 more Features
- "ScyNet" Network Data Port with Wizard Software for Advance Programming

REMOTE START



INSTALLED HERE

\$399

*AUTOMATICS ONLY, VEHICLE MUST HAVE POWER LOCKS

- Complete Remote Engine Start And Keyless Entry System
- Two 5 Button Code Hopping Remote Control with Super Bright Blue LED
- Auto Start Based On Temperature Threshold Set Through (2-Way Remote Optional)
- Two way ready plug and play through antenna port
- Two Car Operation with 2-Way And One Way Remotes (2-Way remote Optional)
- Plug-in user programmable Coded Override Switch and LED on Antenna
- Built-In Parking Light Relay, Programmable (+/-)
- True RPM Sensing for Real Time Cranking
- Remote Start Tachless Mode using Adaptive Digital Processing
- Compatible with All Vehicles
- Gas or Diesel compatibility
- Factory Disarm and Rearm Output (-)
- Power Door Lock Control
- Three Auxiliary Channels with Selectable Output Types
- Turbo Timer plus over 40 more Features
- "ScyNet" Network Data Port with Wizard Software for Advance Programming

